



Photographer: Wayne Robinson
Photographed 2011



Photographer: Wayne Robinson
Photographed 2011



Photographer: Wayne Robinson
Photographed 2011



Photographer: Wayne Robison
Photographed 2011



Photographer: Wayne Robinson
Photographed 2011



Photographer: Wayne Robinson
Photographed 2011



Photographer: Wayne Robinson
Photographed 2011



Photographer: Wayne Robinson
Photographed 2011



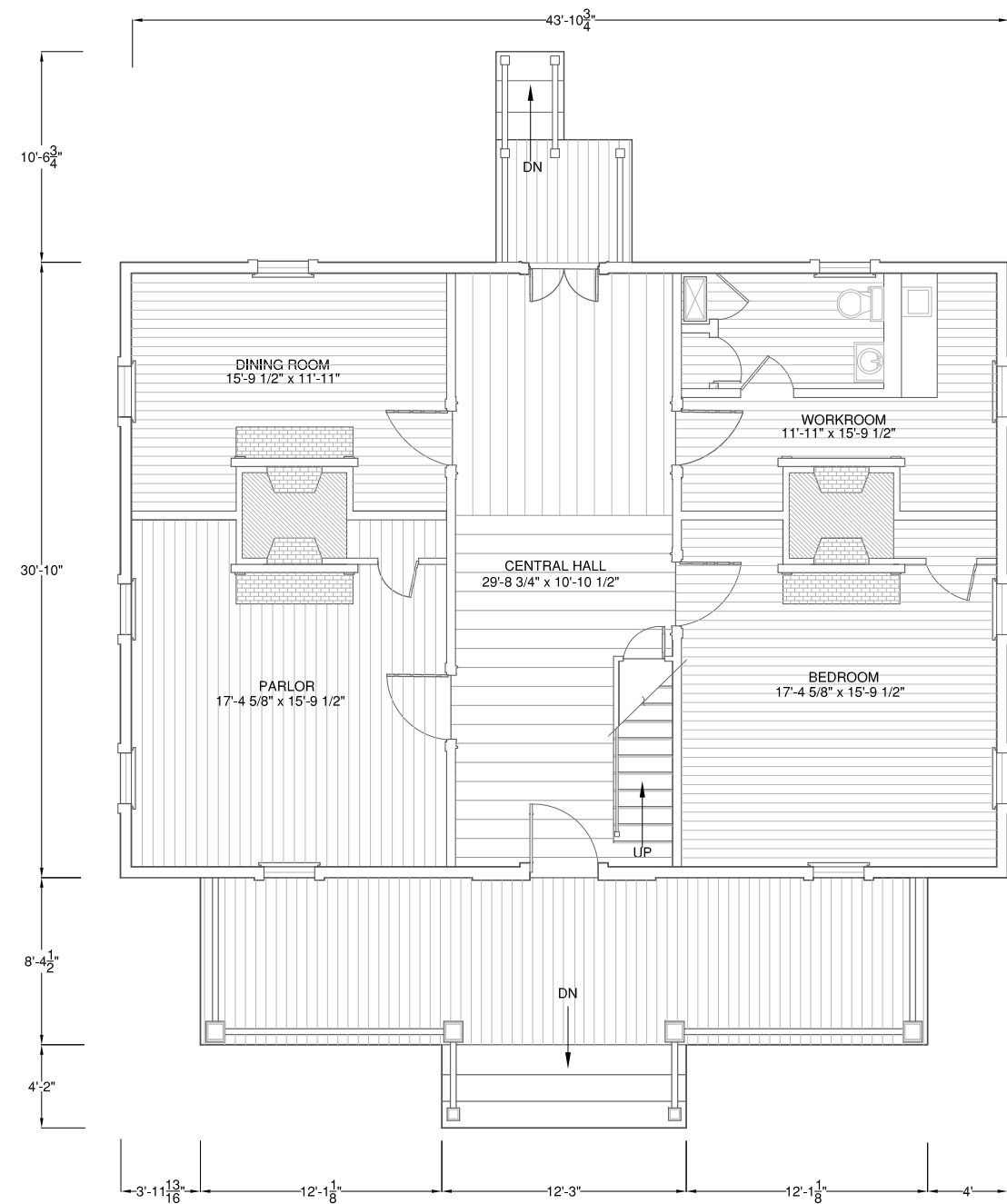
Photographer: Wayne Robinson
Photographed 2011



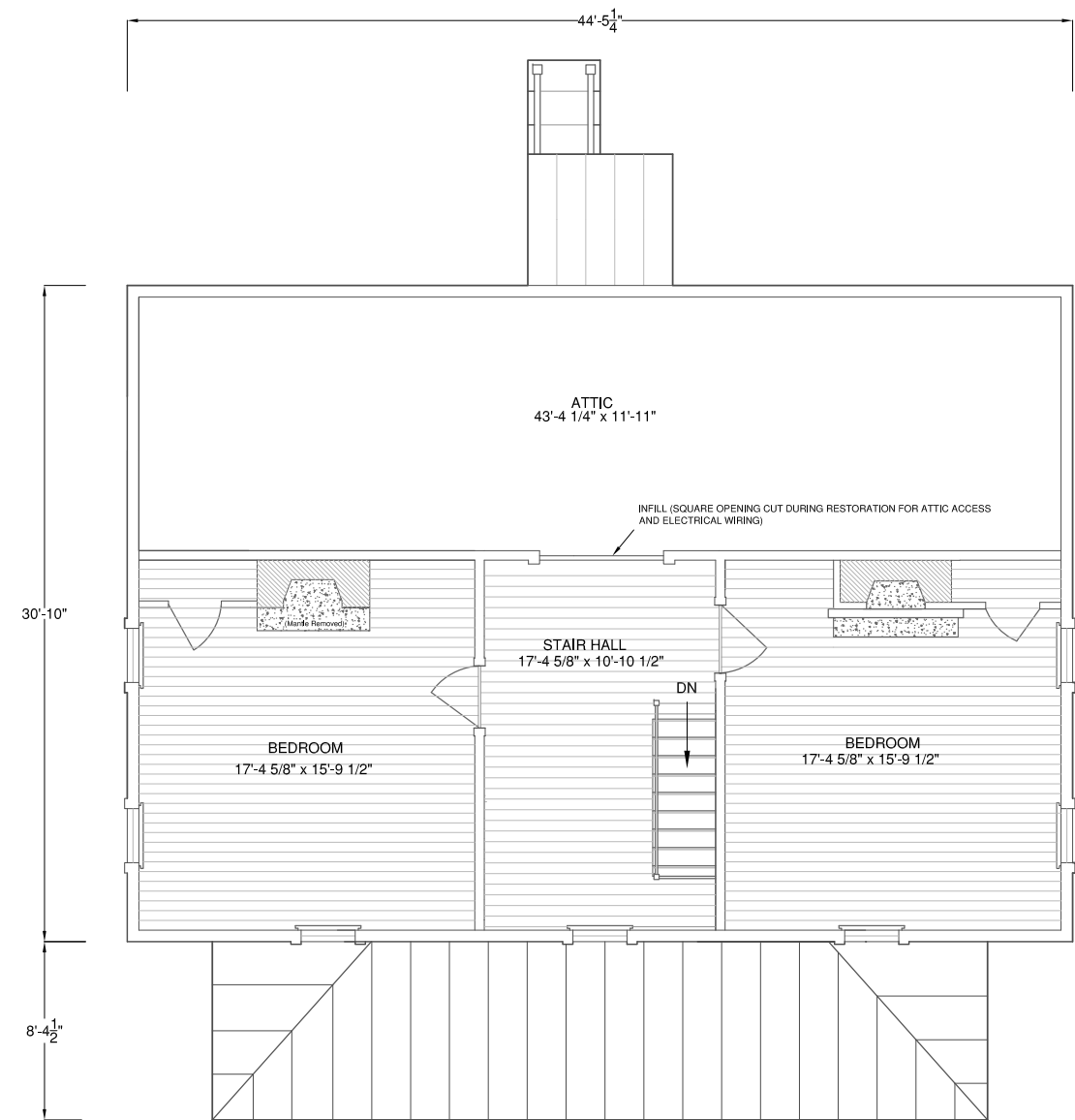
Photographer: Wayne Robinson
Photographed 2011



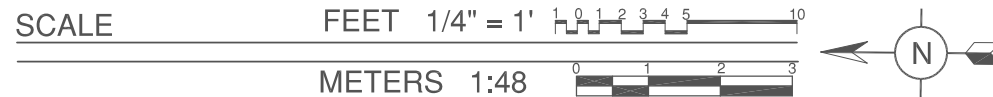
Photographer: Wayne Robinson
Photographed 2011



FIRST FLOOR PLAN



SECOND FLOOR PLAN



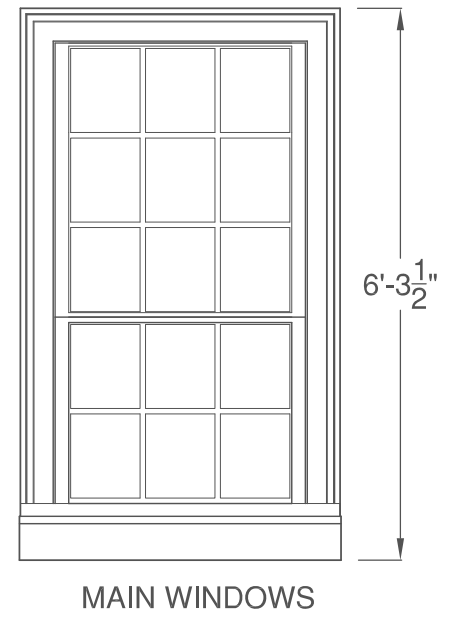
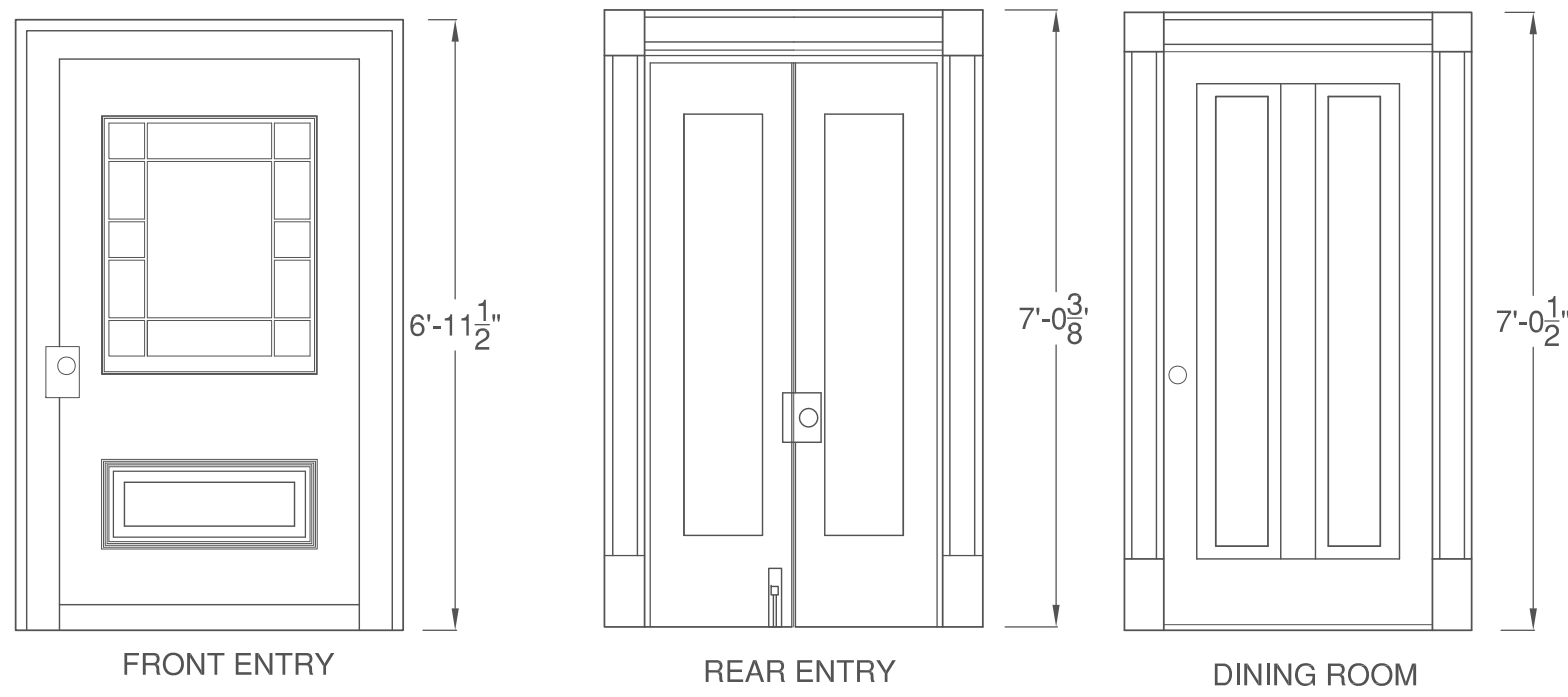
ADDITIONAL NOTES

EXISTING CONDITIONS

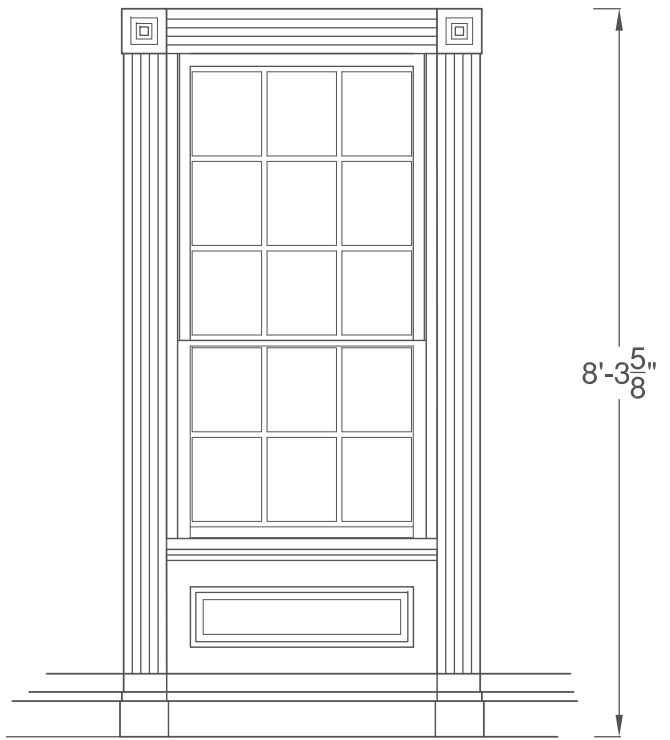
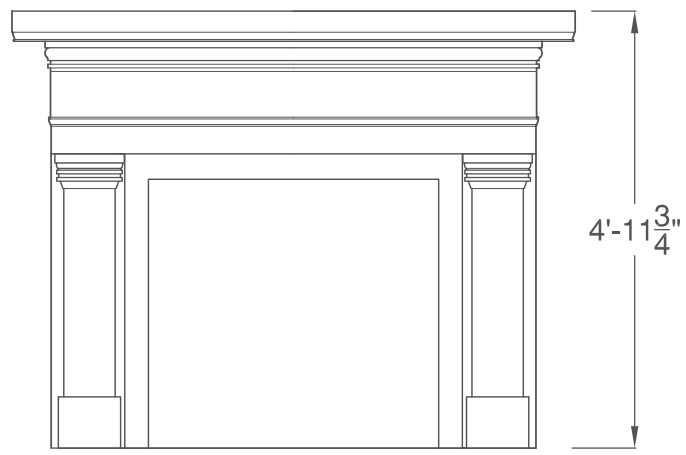
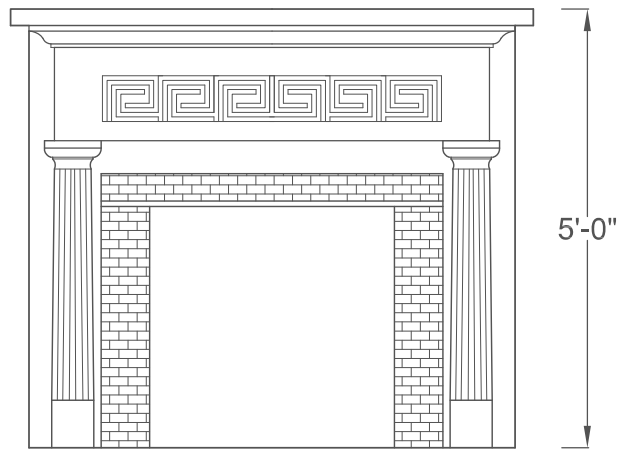
- * EXTERIOR AND FIRST FLOOR HAVE UNDERGONE RESTORATION AND ARE IN EXCELLENT CONDITIONS.
- * THE SECOND FLOOR SHOWS SIGNS OF SIGNIFICANT DETERIORATION OF FLOORBOARDS AND WALLS
- * SOME EVIDENCE OF RESTORATION EFFORTS OF FLOORBOARDS, WALLS, AND MATELS ON SECOND FLOOR.

SIGNIFICANT ALTERATIONS AND/OR RESTORATION WORK

- * REAR LEFT BEDROOM RENOVATED TO A WORKROOM AND BATHROOM
- * DURING RESTORATION, OPEN ACCESS BETWEEN PARLOR AND DINING ROOM CLOSED OFF
- * EXTERIOR ASBESTOS SIDING REMOVED TO EXPOSE ORIGINAL WEATHERBOARD
- * SHED ADDITION ON NORTH FACADE REMOVED DURING RESTORATION
- * SOME EXTERIOR WINDOWS RESTORED TO MATCH ORIGINALS
- * REPLACEMENT FRONT PORCH



CENTRAL HALL DOOR ELEVATIONS



FIREPLACE MANTLES

FIRST FLOOR WINDOWS

SELECT INTERIOR DETAILS

